



MAWDESLEY PARISH COUNCIL

CHRISTMAS 2020 NEWSLETTER



Chairman's Chatter

Firstly, I hope you are all keeping safe and well. As I write this, we are a few days into Lockdown Mark 2 – and the term *déjà vu* comes to mind. Don't forget, if you are self-isolating and you need help obtaining supplies or just someone to talk to, you will find all the contact details for the "Mawdesley Help Each Other Out Group" in this Newsletter. The volunteers are still very active and have been doing a fantastic job all year.

You'll be pleased to hear that the installation of the footpaths around Moss Fields has started. The work will create a path to wind through the wood from the Millennium Green entrance by the bridge. This will lead to a pedestrian gate at the top of Smithy Lane. At this point there will also be a large gate to allow service vehicles onto the field. The path will then continue down, parallel to the Lane to a second gate at the end of Short Butts. Once completed this should provide both a circular walk around the Fields and a safer path for residents walking down Smithy Lane.

Speeding on the roads and lanes around the village has always been a problem. However, since March the number of complaints have increased dramatically. Following these complaints, the Parish Council met with a Lancashire Highways representative and a Police Traffic Officer. During the meeting several speeding hot-spots were visited. Personally, I found the meeting very informative, but sadly there is no magic bullet to solve the problem. It is possible that engineering solutions e.g. speed bumps or chicanes may be considered in the future, but for now the focus will be on improving driver awareness. The SPID on New Street may not keep all the traffic under 20mph, but it does help to keep the majority of vehicles under 30. The Traffic Officer pointed out that drivers become sign blind and the SPID's effectiveness will diminish with time. However, motorists do respond to change and he thought the SPID may be more effective if it was moved around the village regularly. In order to do this, we have consulted with Lancashire Highways and will be installing three more poles. There has however been some success. Highways have at last conceded that the speed limit on Black Moor

Road needs to be formally reviewed. This followed appeals from the MP and the Parish Council with support from the police.

Going back in time, following years of lobbying and despite some issues with Chorley Council in 1935, mains water eventually arrived in Mawdesley in 1938. Prior to that everyone relied on nearby springs and wells. It was reported that even in severe drought conditions Mawdesley was never short of water. Most of the farms, older houses and pubs had their own wells and both New Street and Bradshaw Lane had several streams running under them. So why is this relevant today? Well, that picture should give you some idea how much water passes through the village on its way to the Douglas. There is no doubt that the climate is changing and one effect of this is on the pattern of rainfall. Whilst drainage systems around the village can cope under normal conditions, sudden downpours similar to those we've experienced recently can overwhelm drainage ditches and culverts. If you own land or property with either a culvert under it or a drainage ditch alongside it, you probably have a legal responsibility to ensure that they are kept clear. I've included an abstract from a local government pamphlet on this topic in the newsletter. It's worth a read.

As you will be aware, the annual Remembrance Sunday Parade had to be cancelled this year. However, an informal service was held at the memorial. I would like to thank all those who helped make this happen, particularly David Reynolds for delivering the service, Will Laithwaite the bugler from the Red Admiral Band, the British Legion, Scouts and Ian Clayton and others for their untiring efforts throughout the year to keep the memorial tidy.

And finally, I must give a big thank you to Becky Green and all the contributors for the Pumpkin Trail. It was a great success and a relief to see something fun going on in the village. Nearer to Christmas look out for the "Missing Elf" and Christmas Lights competitions.

Keep safe, best wishes,

Mike Henty Chairman, Mawdesley Parish Council

IT'S CHRISTMAS!

There has never been a more important time to lift our spirits than right now, and the Parish Council fully intend to make sure our village tree sparkles with magic for all to see again this year.

Once again, the wonderful Silcock family have donated a beautiful tree to our village and for that we are truly grateful.

We are still planning for Santa to make his way round the village before Christmas Eve, so please watch out for him and be sure to add to the Christmas cheer from your doorsteps and driveways.

Dates and more details will follow as soon as possible – keep an eye on the Mawdesley Parish Council Facebook page and on the noticeboards.

The lovely 'Mawdesley - Help Each Other Out' community group on Facebook have organised a festive decorate your home competition so Santa will enjoy seeing all your wonderful creations.

So let's make this Christmas the most magical one yet in every way possible and raise all our spirits over the rooftops!



Mawdesley Methodist Church

“Having had to close our doors in March this year we were thrilled to be able to worship together again in August. We worked hard to create a safe place for our congregation and it was well worth it to celebrate with our church family once more. Sadly, we have had to accept the advice to close our doors for a second time, but keep in touch via Zoom and WhatsApp and are lucky to be able to share in our Circuit on line Service.”



Hopefully walkers around the village took time to appreciate our tribute memorial to the fallen. We pray that we soon will once again be opening our doors where you can be sure of a warm welcome at Mawdesley Methodist Church.

During normal circumstances we have a regular Sunday morning service at 10.30am, followed by refreshments. Our Kids Club is held on the first Sunday of the month at the same time.

Christmas will be so different this year. The plan for Christmas morning is to have a Zoom Service instead of our usual family Service in Church.

In the absence of the very well attended 'Carols at Christmas' on Christmas Eve, there may yet be an opportunity for Carols to be enjoyed in a different way this year. We are still hopeful. Watch the noticeboards for details of events.

We wish you all a Happy Christmas and a New Year to look forward to.



Parish Church of St. Peter Mawdesley with Bispham

At this time of year, we would normally be listing our Christmas services and events. However, this year we still don't know what we will be able to do.

We do know that the first Sunday in Advent, November 29th, falls within the lockdown period which will end on Wednesday 2nd December. Revd Michael is streaming services in lockdown and if you would like to receive these please e-mail him "revmwoods@gmail.co.uk".

Prior to lockdown, when we were in tier three, we were able to hold socially distanced services. The congregation was required to use hand sanitiser, to wear face coverings, and had to be socially distanced. Neither singing nor shaking hands were permitted. We anticipate that this will be the requirement when we come out of lockdown which, sadly, will mean no Carol services, Nativity plays or Church Christmas Fair.

On a more positive note we are confident that we will be able to hold our Christmas Eve Holy Communion Service at 6.30pm on 24th December.

When we know what we are able to do we will publish a list of services on the 3churches website www.the3churches.org.uk, on the Church notice board and on the Parish Council notice boards.

We wish everyone a Happy Christmas and a healthy, Covid-free New Year.

John Radford
Churchwarden



Mawdesley St Peter's PTA present...

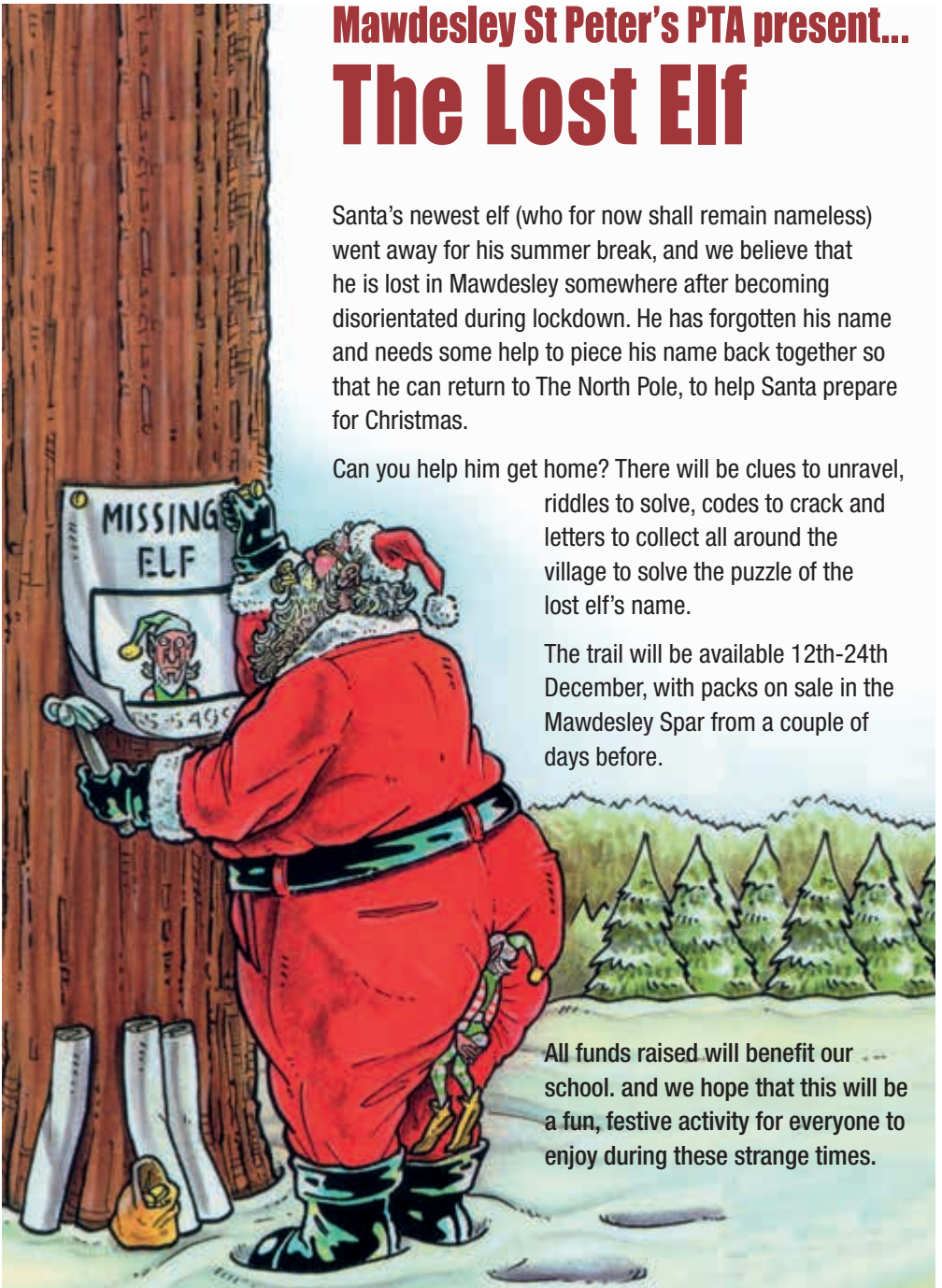
The Lost Elf

Santa's newest elf (who for now shall remain nameless) went away for his summer break, and we believe that he is lost in Mawdesley somewhere after becoming disorientated during lockdown. He has forgotten his name and needs some help to piece his name back together so that he can return to The North Pole, to help Santa prepare for Christmas.

Can you help him get home? There will be clues to unravel, riddles to solve, codes to crack and letters to collect all around the village to solve the puzzle of the lost elf's name.

The trail will be available 12th-24th December, with packs on sale in the Mawdesley Spar from a couple of days before.

All funds raised will benefit our school, and we hope that this will be a fun, festive activity for everyone to enjoy during these strange times.



LIGHT UP MAWDESLEY

Christmas Competition to make
the most creatively decorated house

Prizes for 1st, 2nd and 3rd place

Voting will take place the week beginning 14th December.

Winners will be announced on the 23rd December.

£5 per entry

Entry fee will be donated to Derian House Children's Hospice





'Hello' from Small school, BIG opportunities SS Peter & Paul's School

Greetings from SS Peter & Paul's! We returned to school full time in September after a very strange few months for us all. It was a delight to see the children looking smart in their school uniform and eager to get back to normality. Since September, it has been a busy few weeks and we have been settling into our new routines. All of the children and staff have adapted well and we are, once again, the happy school family, which we love so dearly.

In October, there was great excitement in Class 1 as they undertook their first school trip of the year. Children from Reception, Year 1 and Year 2 headed off to Tatton Park for a trip based on their work on Fairy Tales. The weather was glorious and everyone had a super time, spending the day outdoors and having many lovely learning experiences. The photographs below show what a busy day the children had.



During half term, many of the children were busy carving pumpkins so that they could enter the competition that the PTFA were running. One of our Governors selected a winner from the entries for each class and Poppy S, Lemmy and Joel F were the lucky recipients of a HUGE bar of chocolate!



As part of our activities in November, we have been remembering those who have bravely fought for our safety and freedom over the years and those who do so today. Children decorated Poppies and they have been displayed in the windows for people to see as they walk past the school. It is important that the bravery of these people, some from our local area, is not forgotten. We have also been busy selling items to support the Royal British Legion Poppy Appeal so the children have had a chance to ask lots of questions and further their knowledge.



We are just entering the season of Advent and the whole school is involved in supporting the Mawdesley Village Hall Food Bank appeal and our own Reverse Advent Calendar. This way of 'giving' during Advent will include making donations to those who are less fortunate than ourselves and gathering in the hall each day to share a story with a moral so that we can carry the spirit of Advent through the final weeks of the term.

Wishing you all a Happy Christmas from everyone at SS Peter & Paul's School



Red Admiral Music Academy

Normally at this time of year we'd be writing about the busy Autumn of concerts and competitions we have had and getting ready for the even busier run up to Christmas with bookings every weekend.

It is rather strange to be writing from a position of us not having been physically together as a Music Academy since March. We haven't had rehearsals, put on concerts, played at summer fairs, led processions at Walking Days and Remembrance Day. We won't be playing at Christmas Fairs and events, putting on our own fabulous Christmas concert, or playing carols around Christmas Trees. All in all, it is very strange, we are used to being very busy!

That said we have been able to keep some music going. Friday nights have seen many of our members coming together for online rehearsals and quizzes using Zoom. It isn't quite the same, but it has meant we've been able to keep our members engaged and keep playing.

Regular readers will have heard us mention Brass Factor which is an X-Factor style competition usually taking place in November each year. For the last 3 years we've travelled to Yorkshire to take part, usually doing very well. This year the event couldn't take place, but the organisers decided to make it into an online competition. This is just what we needed, it gave us something to play for and really get back the interest and enthusiasm of playing as a band, albeit from home. Over the last few weeks we've put together an amazing Top 10 Countdown themed performance which featured over 50 of our members all recording at home to create 10 well known tunes and lots of entertaining video clips in the final version. The event is taking place on Facebook and the performance with the most likes wins. At the time of writing we are well in front of the competition, so fingers crossed! By the time you read this, voting will have closed and regardless of the result it has been a fun project to do and enabled us to get back to our strapline of Making Music Fun, Making Music Together. The video is on our Facebook page so have a look if you didn't see it.

Since lockdown started back in March, we've been extremely proud to have so many of our players doing their bit to bring some cheer to their local

communities. In the summer edition we wrote about our players performing outside their house on Thursday evenings during the 'Clap for Key Workers', many of them performing every week, helping to bring communities together. We had lots of players performing on VE Day and we had players providing socially distanced birthday wishes for a special birthday in the village.

This year Remembrance Day couldn't be commemorated as any of us would have wanted but we were proud to do our bit to mark the occasion. Some of our players took part in recorded services, or at services in their schools. Others sounded The Last Post outside their houses on Remembrance Sunday and on Armistice Day. In Mawdesley we were able to have a small service at the War Memorial and one of our players, 15-year-old William Laithwaite was on hand to sound the Last Post and Reveille.

Traditionally the first couple of months of the year are home to some of the major Brass Band competitions and ordinarily after Christmas we would be straight into rehearsing for them. These too have been cancelled and realistically it is looking like Spring before we are likely to be able to think about getting back to rehearsals and performing. Hopefully there is light at the end of the tunnel though and 2021 will see us getting back to doing what we love.

Twelve months without any income from events, concerts and competitions is having a huge financial impact on Red Admiral Music Academy. We will keep going but our ability to invest in instruments, music and equipment to help with continued development and growth of the organisation will be hit hard, just like many other organisations. Our plea to everyone who enjoys listening to music is please support us when we are able to play again; come to our concerts and events, throw a few coins in our collecting buckets and maybe buy an extra raffle ticket. So much good comes from music and we need to ensure it continues to thrive in our community.

Finally keep an eye on our Facebook page, there may be some virtual Christmas treats and in the meantime, we wish everyone a Merry Christmas and a much improved 2021.

Cricket Club News



The onset of dark days and the restrictions currently in place can certainly make one feel more than a little fed up at the moment. However, at the Cricket Club we are always full of optimism and looking back we enjoyed a great summer albeit with a somewhat delayed start and with restrictions in place which meant, for example, that we couldn't use the pavilion.

Our three senior teams did manage to play half a season and the first team reached the final of the Tier

2 Palace Shield competition being beaten by Leyland II's in the final at their ground. The players are certainly already looking forward to next summer and a push to get promoted into the Premier League.

Our women's team [pictured] also had a truncated season but played in two late summer tournaments against some of the top teams from the Liverpool competition and performed well.

The game against the Tennis Club was as keenly contested as normal with this year the Cricket Club winning to make it three each in the recent series that started in 2014.

Over the autumn we have been working on improving the drainage of both the cricket field and the football field in the hope that we will be in a better position in years to come to deal with the increasing amount of rain that global warming is said to be bringing our way.

The Club has just launched the Chorley and West Lancashire Cricket Academy which has been set up to run a number of camps and courses, especially over the winter months, to enable young cricketers from the age 7 upwards to get involved in the sport. 44 children attended the half term camp in October which was held at the sports hall at St Bedes' school in Ormskirk. The ten week winter development programme has been delayed due to the latest lockdown but is hoping to start on the 5th December.



If you have a youngster, either a boy or girl, and think that he or she might like to give cricket a go, contact me or go to the website <https://www.cwlca.co.uk/> and see what courses are on offer. Of particular interest to young children will be the starter soft ball camps we are running for the Under 9's. This year we had three girls selected for trials with Lancashire so cricket is now certainly not just a sport for boys. Our aim is to become a centre for junior cricket excellence within the County. This summer our U15's and U11's both won their leagues so we are making good progress.



Socially distanced participants at the CWLCA Mawdesley Summer Camp

As always we need lots of volunteers to run our Club, so if you fancy joining the grounds team and working on the cricket field or the surrounding areas, you would be very welcome. Again just contact me. It is great to get out in the fresh air with a purpose especially in these pandemic times. If you would like to earn a few extra pounds on a Saturday or Sunday afternoon, we are always on the look-out for scorers and umpires. We already have a number of people who want to act as scorers at matches next summer and we will hopefully be running a training course for them in March, so if that interests you get in touch. For those potential umpires amongst you, you would be very welcome and some excellent training courses are available as well. Contact Martin on 01704 821023 for more information.

AJ's

BISTRO

BEAUTIFUL NEW MENU JUST LAUNCHED!

Outdoor heated terrace now open!

Amazing breakfasts, lunches and evening meals, great range of drinks, pop in and enjoy a mulled wine.

Open to the public.

01704 778060 | info@stockshallspa.co.uk

Stocks Hall Health Club and Spa, Hall Lane, Mawdesley, Ormskirk, Lancashire, L40 2QZ

stockshallspa.co.uk





STOCKS HALL
HEALTH CLUB AND SPA

MAWDESLEY

*Memberships
now available*

All classes and gym instruction included in the price.

Pay for a year and get 2 months FREE!

Gift and treatment vouchers available.

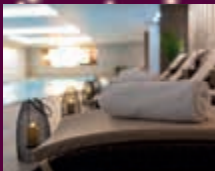
Beautiful spa days in luxurious 5 star surroundings.

Sunken garden terrace now open with outdoor hot tub and fire pits!

01704 778060 | info@stockshallspa.co.uk

Stocks Hall Health Club and Spa, Hall Lane, Mawdesley, Ormskirk, Lancashire, L40 2QZ

stockshallspa.co.uk



Millennium Green



Virtual 10K & GoFundMe

A huge thank you to all you who took part in the Virtual 10K, we raised a fantastic **£650!**

As a village charity we rely on the generosity of you all to fund the maintenance of, and improvements to, the Green. This year we have been unable to hold many events due to Covid but we have been overwhelmed by the support of the village in contributing to our GoFundMe page and have raised a further **£645**. Again, a massive thanks to all who have supported us.

The link is still open and you can donate here:

<https://uk.gofundme.com/f/mawdesley-millennium-green-fund>

We hope to be back next year with our usual events (Covid permitting), plus an extra special get-together on the Green.

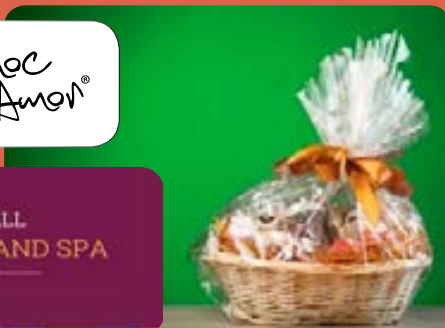
Christmas Hamper Raffle

1st prize - Large Luxury Hamper (worth over £300) inc. champagne, 4 Stocks Hall Spa day passes, Roberts & Co coffee, Choc Amor truffles, wine, Christmas treats and much more

2nd prize – Small Luxury Hamper (worth over £100) inc. 2 Stocks Hall Spa day passes, wine, Choc Amor truffles and much more

3rd prize – Single Malt Whisky

Tickets are on sale now at Mawdesley Village Spar for £5; all proceeds go to the Millennium Green. Draw will be held on 20th December at the Spar



Monthly 50:50 Club

Just £24 per year gives you the chance to win £50 (1st prize) or £12.50 (4 prizes) in our monthly draw. Pay by standing order:

Acc name: Mawdesley Millennium Green Trust M2000

Acc no: 67633060 Sort code: 77-32-20

Please contact Peter Curry on 01704 823605 or pete.curry5@hotmail.com to confirm your details

Volunteers are always needed to help with maintenance or fundraising; if you can spare a little time please contact Peter McNamee: peterwmcnamee@gmail.com

Mawdesley Millennium Green is a registered charity no. 1075755



Hello to one and all, my name is Peter, and along with my wife Gulnara we are the new licensees of The Red Lion. We are very much looking forward to meeting you all over the coming months with a warm welcome.

I would like to thank the Parish Council for allowing us to introduce ourselves in your newsletter.

The Red Lion is our second pub which will run alongside The Anchor in Hutton. Our plans are very simple, we want to make the pub the centre of the community. We will work alongside all the sports teams (please let me know when nets start cricketers), as well as any societies or groups. We are only the custodians of YOUR pub, we will be here to listen to what you want. Our intention is to live in the village and join in with village life where time permits.

We will initially not be changing too much. However, there will be Theme Nights and Special Offers as well as some new wines and spirits. For the Ale drinkers, we will endeavour to keep a stock of your preferred ales. Due to the challenging times we are in at the moment, we will be continuing with a limited menu for the short term with the intention to build on the reputation the pub has always had for good food. Our intentions are to remain open through these difficult times as long as government restrictions allow us to operate and normal drinks service as it is not viable to do so when food has to be provided.

With the good news of vaccines on the close horizon, we hope that by Spring we will be back to some kind of normality and we can then start shaping the pub to suit the needs of you all.

We can only achieve these things with the help of you, the community.

See you all soon, *Peter*



DRAINS, WATERCOURSES AND DITCHES: RESPONSIBILITIES

Drains

You should keep the drains clear on your property and ensure that you do not drain water into your neighbour's property or foul drain. There is a right of drainage that allows water that flows across your land to flow downhill naturally to your neighbour's land. But you are not allowed to artificially channel water in a way that will cause damage your neighbour's land. If you do, you may face a civil action.

Example:

Allowed - rainwater that falls on your lawn is allowed to flow downhill through your neighbour's land.

Not allowed - water from your property is channelled through a down pipe or another pipe onto your neighbour's property.

Watercourses and Ditches

The normal responsibility for the maintenance of watercourses and ditches is shown in the illustrations.

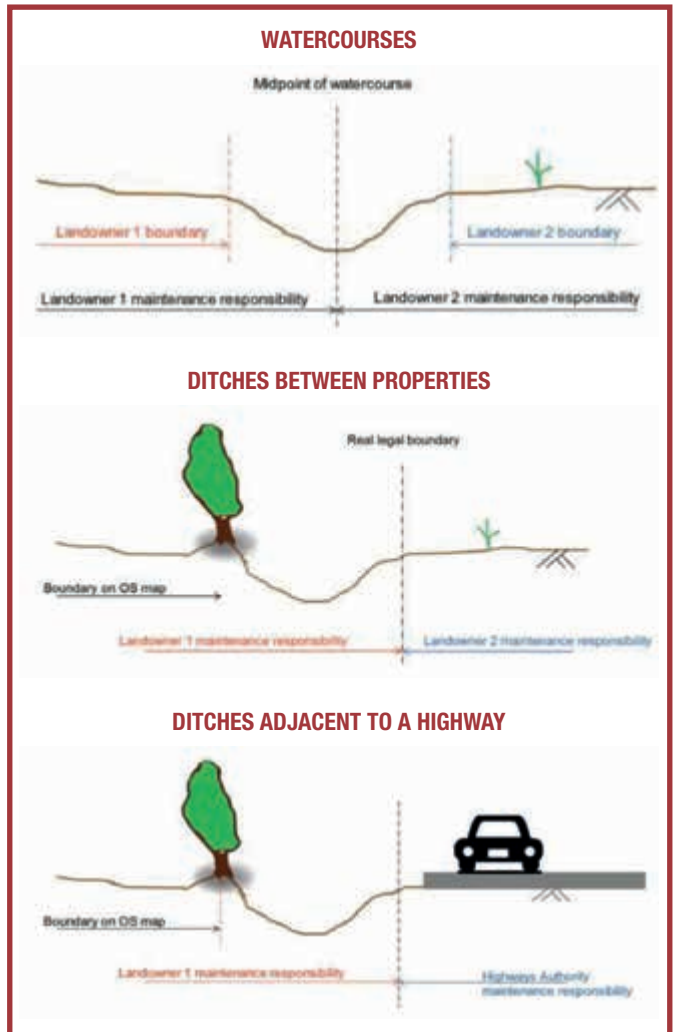
A watercourse is a natural feature which drains the surrounding catchment and normally has some water flowing in it. A ditch is a man-made feature to drain an area of land. Historically these were normally dug by a landowner at the edge of their field and the spoil deposited on their land, on which hedges grew over time. As a result, the common law 'hedge and ditch' rule says the landowner responsible for maintaining the ditch is normally the landowner on the opposite side of the hedge.

Culverts

A culvert is simply a covered watercourse and the same maintenance principles apply to them as to watercourses.

Responsible landowners must keep any structure such as culverts (but also trash screens, weirs, gates etc.) on their property clear from debris.

If you are a landowner and have a culvert under your land, you need to maintain it free from leaves and debris. If you take no action, and it becomes blocked and flood damage results, you could be held liable for this damage.



The people of Mawdesley and the surrounding area have collected a large amount of food and other items for donation to a food bank in Skelmersdale. The idea was born at the village hall and local schools were quick to get involved. Social media platforms were used to invite people to drop off donations on a Saturday morning and the response was said to be *“Overwhelming”*.

“We were delighted, though not surprised, at the generosity of folks” said Finlay Robertson, Chairman of the Trustees of the Village Hall. Both schools in the village had organised donations from the parents of pupils and locals turned up at the hall throughout the morning with bags and boxes of essentials for those in need during this particularly difficult time for many families.



Volunteers with some of the items donated at Mawdesley Village Hall

to Donate to Food Bank



This was the first of a number of planned weekly collections and the items donated will be delivered to Skelmersdale Food Bank.

A spokesperson for the hall said:
“Obviously, with the pandemic, what was a very busy venue has been very quiet lately. We wanted to do something for people who were finding things particularly difficult at this time. This seemed a great idea and we were delighted with the response from the schools and local people”.



Butties & Bakes



email: hannah@hannahmakecake.co.uk

Tel: 07813 981 803

**Unit 5A, Towngate Works
Dark Lane, Mawdesley**

Breakfast - Lunch - Salads

Soups - Hot Lunch Pots

Picnic Boxes - Cake Platters

Celebration Cakes

Catering - Children's Parties



Find us on Facebook @hannahmakecake

PROVIDING FREEDOM AT HOME
INDEPENDENT



Living



Require care or support in your own home?

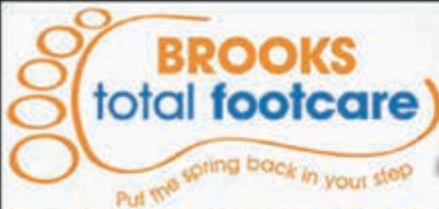
- Personal Care (washing, bathing, dressing etc)
- Companionship, Overnight care
- Housekeeping, Medication & Meals
- Out & About – medical/social appointments
- Respite / End of Life Care
- ✓ Many customers in Mawdesley since 2011
- ✓ Insured & regulated – rated “GOOD” by the regulator
- ✓ 30 minute calls, or more
- ✓ Kind well presented carers
- ✓ Experience with Alzheimers, Parkinsons, Stroke, Cancer
- ✓ Supporter of Mawdesley Community events

CUSTOMER TESTIMONIAL

“We started using Independent Living in 2012 and found them to be reliable. At various times we have asked for temporary increases in care due to holiday cover and ill health. At short notice Amanda and the team have always helped us. If we didn't find them good we wouldn't have used them for over 4 years!”

Mr & Mrs X

Please call Amanda or Lillian on 01257 696 050 from more information



CHIROPODY & PODIATRY SERVICES

Treatment of:

- Corns
- Callus (hard skin)
- In-growing Toe Nail Management
- Nail Cutting
- Verrucae
- Toe Nail Reconstruction
- Biomechanical Assessments
- Orthotics (specialist insoles)
- Plantar Fasciitis (heel pain)
- Nail Surgery
- Diabetic Assessments
- Natural Skincare Products

BROOKS Total Footcare Clinic • Mawdesley

Home visits also available in: Southport, West Lancs & surrounding areas



Tel: 01704 778642
www.brookstotalfootcare.co.uk



Mawdesley Parish Council Contacts

Chairman Cllr. Mike Henty	Tel 01704 821113	E-mail mhenviro@btinternet.com
Vice Chairman Cllr. Colin Freeman	Tel 823374	E-mail cllrcolingfreeman@gmail.com
Cllr. Matthew Worthington	Tel 07769 336375	E-mail mpc.mattworthington@gmail.com
Cllr. Grahame Green		E-mail mpc.grahamegreen@gmail.com
Cllr. Roger Mallows	Tel 07962 186751	E-mail rhmallowsmpc@gmail.com
Cllr. Gillien Worthington	Tel 07867 482735	E-mail gillworthington.mpc@gmail.com
Cllr. Lisa Rutter	Tel 07711 505513	E-mail mpclisarutter@hotmail.com
Parish Clerk Angela Nicholls	Tel 07548 686364	E-mail mawdesleyparishclerk@gmail.com
Lengthsman Peter Boardman	Tel 07443 653558	